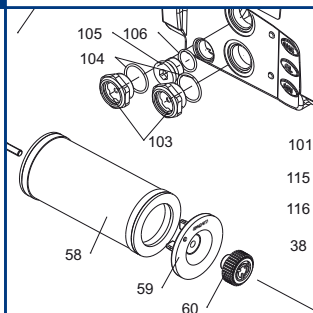


U 4.40

Ersatzteilliste
Spare parts list
Liste de pièces de rechange
Listino pezzi di ricambio
Lista de piezas de recambio
Reserveonderdelenlijst
Reservedelsliste
Reservdelislista

Reservedelsliste
Varaosaluettelo
Wykaz części zamiennych
Seznam náhradních dílů
Tartalékalkatrész lista
Κατάλογος ανταλλακτικών
Yedek parça listesi
Перечень запасных частей
备用零件目录
スペアパーツリスト



SERVICE

BECKER
D-42279 Wuppertal
www.becker-international.com

No. **A** year XXXX

type **U 4.40-XX** Index Variante

frequency XXXX Hz

speed XXXX min⁻¹

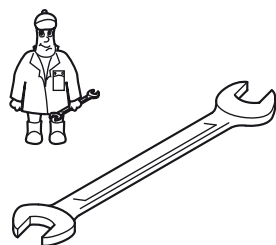
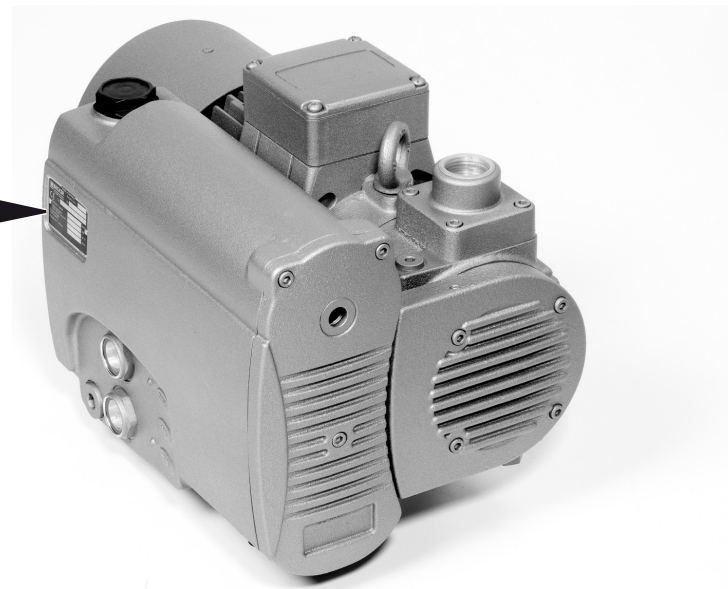
power required XXXX kW

inlet capacity XXXX m³/h

pressure + XXXX mbar

vacuum - XXXX mbar

Made in Germany



Pos.	Menge ²⁾ Quantity Quantité Quantità Cantidad	Bestell-Nr. Ident No. No. Identification No. Identificazione No. de pedido	Bezeichnung Description Designation Designazione Descripción
□	1	549000 40500	Dichtungssatz, Complete set of seals, Jeu de joints, Kit di guarnizioni, Junta Completa
7	SATZ/KIT	900585 00003	Schieber, Rotor Vane, Palette, Empujador
58	1	965414 00000	Luftentölelement, Oil separating element, Element separation huile, Cartuccia sepa-ratore olio, Elemento de desaceitar de aire

²⁾ erforderliche Bestellmenge / necessary order quantity / quantité nécessaire / quantità di ordinazione necessari / cantidad necesario

Wartung
Maintenance
Entretien
Manutenzione
Mantenimiento



U 4.40

Standard



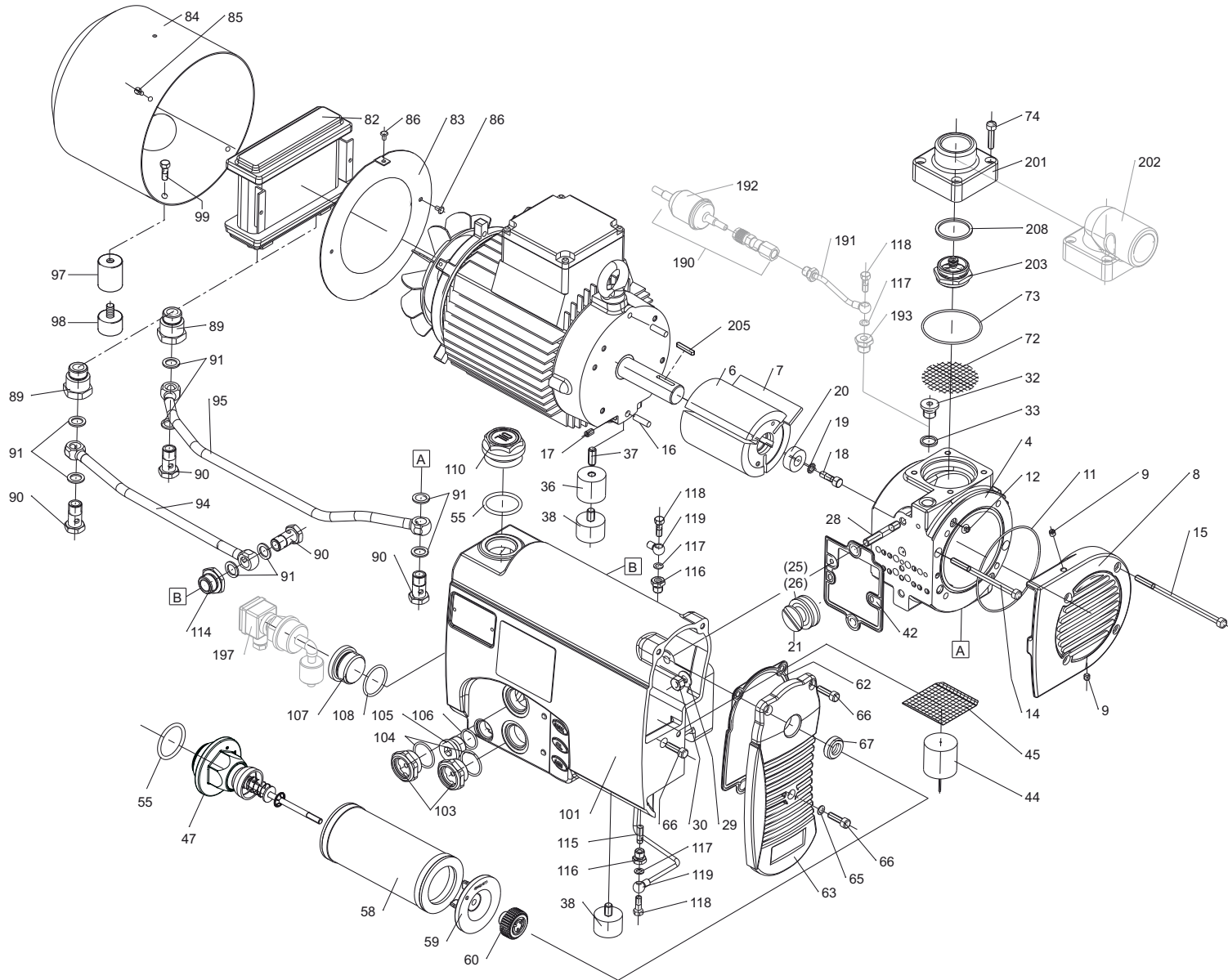
Variante



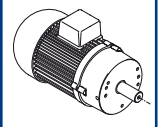
U 4.40/XX

- ①
/09
- mit Gasballastventil
 - with gas ballast valve
 - avec l'este d'air
 - con valvola di zavoratrice
 - con valvula de lastre de gas

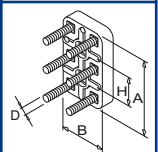
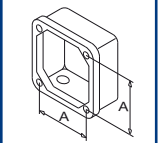
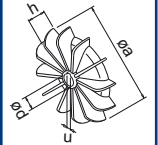
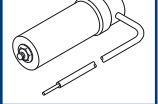
- ② ③
/0-25 + /0-56
- mit Öl-Wasser-Kühler
 - with oil-to-water heat exchanger
 - avec réfrigérant à l'huile et à l'eau
 - con radiatore ad olio - acqua
 - con refrigerador aceite-agua






SERVICE ?



C = ? μ F
U = ? V



INDEX	Pos.	Bestell Nr.	Beschreibung	
U 4.40	□	549000 40500	DICHTUNGSSATZ ¹⁾	
	4	500101 40500	GEHÄUSE, KOMPLETT	
	6	020000 40500	KOLBEN	
	7	900585 00003	SCHIEBER (SATZ) ²⁾	
	8	000700 40500	SEITENDECKEL	
	9	945618 00000	GEWINDESTIFT	
	14	945373 00000	INNENSECHSKANTSCHRAUBE	
	15	945374 00000	INNENSECHSKANTSCHRAUBE	
	16	947628 01000	ZYLINDERSTIFT	
	17	945801 01000	GEWINDESTIFT	
	18	901807 00000	WELLENENDSCHRAUBE	
	19	949203 00000	ZAHNSCHEIBE	
	20	016800 05000	SPANNSCHEIBE	
	21	537500 10700	VENTIL, KOMPL.	
	28	946917 00000	STIFTSCHRAUBE	
	29	917107 00000	TELLERFEDER	
	30	947105 00000	SECHSKANTMUTTER	
	32	951228 02000	VERSCHLUSS-SCHRAUBE	
	36	068101 40500	ZWISCHENSTÜCK	
	37	945634 00000	GEWINDESTIFT	
	38	741310 60000	GUMMIPUFFER	
	44	867800 99559	SCHWIMMER	
	45	005001 40300	SIEB	
	47	727503 99628	ABBLASEVENTIL	
	58	965414 00000	LUFTENTÖLELEMENT (1x) ²⁾	
	59	016802 40300	SPANNSCHEIBE	
	60	921500 50000	HANDGRIFF	
	63	003700 40500	DECKEL	
	66	945320 00000	INNENSECHSKANTSCHRAUBE	
	67	953103 00000	DÜSE	
	72	005000 40500	SIEB	
	74	945321 00000	INNENSECHSKANTSCHRAUBE	
	82	960200 40500	KÜHLER	
	83	917800 40500	HALTERRING	
	84	960700 40500	LÜFTERHAUBE	
	85	946308 00000	ZYLINDERSCHRAUBE	
	86	948750 00000	BLINDNIET	
	89	912317 00000	ANSCHLUSS-SCHRAUBE	
	90	948407 00000	HOHLSCHRAUBE	
	94	012203 40500	LEITUNG	
	95	012204 40500	LEITUNG	
	97	068100 40300	STÜTZE	
	98	741310 80000	GUMMIPUFFER	
	99	945218 00000	SECHSKANTSCHRAUBE	
	101	002401 40500	ÖLABSCHEIDERGEHÄUSE	
	103	907309 00000	ÖLSCHAUGLAS	
	105	951219 00000	VERSCHLUSS-SCHRAUBE	
	107	951221 00000	VERSCHLUSS-SCHRAUBE	
	110	916800 10000	SCHRAUBDECKEL	
	114	912318 00000	ANSCHLUSS-SCHRAUBE	
	115	003300 10700	DÜSE	
	116	912300 00000	ANSCHLUSS-SCHRAUBE	
	118	009400 19000	KUGELSTÜCKSCHRAUBE	
	119	012200 40300	LEITUNG	
	197	741103 99682	NIVEAUGEBER - OPTIONAL	
	201	007801 40500	GEWINDEFLANSCH - STANDARD	
	202	007802 40500	GEWINDEFLANSCH 90° - OPTIONAL	
	203	537506 99633	RÜCKSCHLAGVENTIL	
	205	947701 00000	PASSFEDER	

INDEX	Pos.	Bestell Nr.	Beschreibung	
		960009 00000 960016 00100 960023 00100	BECKER LUBE M 100 (MINERALÖL) - 1L BECKER LUBE S 100 (SYNTHETIKÖL) - 1L BECKER LUBE SL 100 (LEBENSMITTELBEREICH) - 1L	
¹⁾ Dichtungssatz - 549000 40500 - Pos.: 11, 12, 25, 26, 42, 55, 62, 65, 73, 91, 104, 106, 117, 147, 208 ²⁾ erforderliche Bestellmenge / Wartung				


INDEX	Pos.	Ident No.	Description
U 4.40	□	549000 40500	SET OF SEALS ¹⁾
	4	500101 40500	PUMP BODY
	6	020000 40500	ROTOR
	7	900585 00003	VANES (KIT) ²⁾
	8	000700 40500	LID
	9	945618 00000	THREADED PIN
	14	945373 00000	SOCKET HEAD SCREW
	15	945374 00000	SOCKET HEAD SCREW
	16	947628 01000	STRAIGHT PIN
	17	945801 01000	THREADED PIN
	18	901807 00000	SCREW
	19	949203 00000	TOOTHED SPRING WASHER
	20	016800 05000	CLAMPING DISC
	21	537500 10700	VALVE
	28	946917 00000	STUD
	29	917107 00000	CUP SPRING
	30	947105 00000	HEX.NUT
	32	951228 02000	LOCKING SCREW
	36	068101 40500	FLANGES
	37	945634 00000	THREADED PIN
38	741310 60000	RUBBER BUFFER	
44	867800 99559	FLOAT	
45	005001 40300	SIEVE	
47	727503 99628	BLOW-OFF VALVE	
58	965414 00000	OIL SEPARATING ELEMENT (1x) ²⁾	
59	016802 40300	CLAMPING DISC	
60	921500 50000	HANDLE	
63	003700 40500	COVER	
66	945320 00000	SOCKET HEAD SCREW	
67	953103 00000	NOZZLE	
72	005000 40500	METAL FILTER	
74	945321 00000	SOCKET HEAD SCREW	
82	960200 40500	COOLER	
83	917800 40500	RETAINING RING	
84	960700 40500	VENTILATOR HOOD	
85	946308 00000	CYLINDER SCREW	
86	948750 00000	BLIND RIVET	
89	912317 00000	CONNECTING SCREW	
90	948407 00000	HOLLOW SCREW	
94	012203 40500	PIPE	
95	012204 40500	PIPE	
97	068100 40300	SUPPORT PILLAR	
98	741310 80000	RUBBER BUFFER	
99	945218 00000	HEX. HEAD SCREW	
101	002401 40500	HOUSING FOR OIL SEPARATOR	
103	907309 00000	OIL SIGHT GLASS	
105	951219 00000	LOCKING SCREW	
107	951221 00000	LOCKING SCREW	
110	916800 10000	COVER	
114	912318 00000	CONNECTING SCREW	
115	003300 10700	NOZZLE	
116	912300 00000	CONNECTING SCREW	
118	009400 19000	HOLLOW HOLDING SCREW	
119	012200 40300	PIPE	
197	741103 99682	OIL LEVEL CONTROL - OPTIONAL	
201	007801 40500	SCREWED FLANGE - STANDARD	
202	007802 40500	SCREWED FLANGE 90° - OPTIONAL	
203	537506 99633	NON RETURN VALVE	
205	947701 00000	KEY	




INDEX	Pos.	Ident No.	Description
		960009 00000 960016 00100 960023 00100	BECKER LUBE M 100 (MINERAL OIL) - 1L BECKER LUBE S 100 (SYNTHETIC OIL) - 1L BECKER LUBE SL 100 (FOOD SECTOR) - 1L
¹⁾ Set of seals - 549000 40500 - Pos.: 11, 12, 25, 26, 42, 55, 62, 65, 73, 91, 104, 106, 117, 147, 208 ²⁾ necessary order quantity / maintenance			




INDICE	Pos.	No. Identification	Designation
U 4.40	□	549000 40500	JEU DE JOINTS ¹⁾
	4	500101 40500	CARCASSE
	6	020000 40500	PISTON
	7	900585 00003	PALETTES (KIT) ²⁾
	8	000700 40500	COUVERCLE
	9	945618 00000	GOUPILLE FILETEE
	14	945373 00000	VIS HEXAGONALE INTERNE
	15	945374 00000	VIS HEXAGONALE INTERNE
	16	947628 01000	GOUPILLE CYLINDRIQUE
	17	945801 01000	GOUPILLE FILETEE
	18	901807 00000	VIS
	19	949203 00000	DENT DISQUE
	20	016800 05000	DISQUE DE SERRAGE
	21	537500 10700	SOUPAPE
	28	946917 00000	PRISONNIER
	29	917107 00000	RESSORT BELLEVILLE
	30	947105 00000	ECROU A 6 PANS
	32	951228 02000	BOUCHON
	36	068101 40500	BRIDES
	37	945634 00000	GOUPILLE FILETEE
38	741310 60000	AMORTISSEUR EN CAOUTCHOUC	
44	867800 99559	PIED CAOUTCHOVE	
45	005001 40300	FILTRE	
47	727503 99628	SILENCIEUX	
58	965414 00000	ELEMENT SEPARATION HUILE (1x) ²⁾	
59	016802 40300	DISQUE DE SERRAGE	
60	921500 50000	POIGNEE	
63	003700 40500	COUVERCLE	
66	945320 00000	VIS HEXAGONALE INTERNE	
67	953103 00000	BUSE	
72	005000 40500	FILTRE EN METAL	
74	945321 00000	VIS HEXAGONALE INTERNE	
82	960200 40500	REFROIDISSEUR	
83	917800 40500	BAGUE DE MAINTIENT	
84	960700 40500	CARTER DE VENTILATEUR	
85	946308 00000	TETE A VIS CYLINDRIQUE	
86	948750 00000	RIVET AVEUGLIE	
89	912317 00000	VIS DE RACCORD	
90	948407 00000	VIS CREUSE	
94	012203 40500	TUYAU	
95	012204 40500	TUYAU	
97	068100 40300	SUPPORT INTERMEDIAIRE	
98	741310 80000	AMORTISSEUR EN CAOUTCHOUC	
99	945218 00000	VIS HEXAGONALE	
101	002401 40500	CORP DE SEPARATEUR D'HUILE	
103	907309 00000	VERRE REGARD	
105	951219 00000	BOUCHON	
107	951221 00000	BOUCHON	
110	916800 10000	COUVERCLE	
114	912318 00000	VIS DE RACCORD	
115	003300 10700	GICLEUR	
116	912300 00000	VIS DE RACCORD	
118	009400 19000	VIS CREUSE DE FIXATION	
119	012200 40300	TUYAU	
197	741103 99682	INDICATEUR DE NIVEAU - EN OPTION	
201	007801 40500	BRIDE FILETEE - STANDARD	
202	007802 40500	BRIDE FILETEE 90° - EN OPTION	
203	537506 99633	SOUPAPE ANTI-RETOUR	
205	947701 00000	CLAVETTE	

INDICE	Pos.	No. Identification	Designation
		960009 00000 960016 00100 960023 00100	BECKER LUBE M 100 (HUILE MINÉRALE) - 1L BECKER LUBE S 100 (L'HUILE SYNTHÉTIQUE) - 1L BECKER LUBE SL 100 (SECTEUR DE L'ALIMENTATION) - 1L
¹⁾ Jeu de joints - 549000 40500 - Pos.: 11, 12, 25, 26, 42, 55, 62, 65, 73, 91, 104, 106, 117, 147, 208 ²⁾ quantité nécessaire / entretien			

INDICE	Pos.	No. Identificazione	Designazione
U 4.40	□	549000 40500	SERIE DI GUARNIZIONE ¹⁾
	4	500101 40500	CARCASSA
	6	020000 40500	ROTORE
	7	900585 00003	PALETTE (KIT) ²⁾
	8	000700 40500	COPERCHIO
	9	945618 00000	SPINA FILETTATURA
	14	945373 00000	VITE ESAGONALE INTERNA
	15	945374 00000	VITE ESAGONALE INTERNA
	16	947628 01000	PERNO
	17	945801 01000	SPINA FILETTOTA
	18	901807 00000	VITE
	19	949203 00000	DISCO A DENTE
	20	016800 05000	DISCO DI FISSAGGIO
	21	537500 10700	VALVOLA
	28	946917 00000	L'ASTA A VITE
	29	917107 00000	MOLLA A DISCO
	30	947105 00000	DADO ESAGONALE
	32	951228 02000	VITE DI CHIUSURA
	36	068101 40500	FLANGE
	37	945634 00000	SPINA FILETTATURA
	38	741310 60000	AMMORTIZZATORE IN GOMMA
	44	867800 99559	GALLEGGIANTE
	45	005001 40300	FILTRO
	47	727503 99628	SILENZIATORE
	58	965414 00000	CARTUCCIA SEPARATORE OLIO (1x) ²⁾
	59	016802 40300	DISCO DI FISSAGGIO
	60	921500 50000	MANETTA
	63	003700 40500	COPERCHIO
	66	945320 00000	VITE ESAGONALE INTERNA
	67	953103 00000	UGGELLO
	72	005000 40500	FILTRO METALLICO
	74	945321 00000	VITE ESAGONALE INTERNA
	82	960200 40500	RAFREDDATORE
	83	917800 40500	ANELLO PORTANTE
	84	960700 40500	CARTER DEL VENTILATORE
	85	946308 00000	VITE A TESTA CILINDRICA
	86	948750 00000	RIVETTO CIECO
	89	912317 00000	ATTACO FILETTATO
	90	948407 00000	VITE ESAGONALE
	94	012203 40500	CONDOTTO
	95	012204 40500	CONDOTTO
	97	068100 40300	SUPPORTO
	98	741310 80000	AMMORTIZZATORE IN GOMMA
	99	945218 00000	VITE ESAGONALE
	101	002401 40500	CARCASSA SEPARAZIONE OLIO
	103	907309 00000	SPIA LIVELLO OLIO
	105	951219 00000	VITE DI CHIUSURA
	107	951221 00000	VITE DI CHIUSURA
	110	916800 10000	COPERCHIO
	114	912318 00000	ATTACO FILETTATO
	115	003300 10700	UGELLO
	116	912300 00000	ATTACO FILETTATO
	118	009400 19000	VITE PASSAGGIO OLIO
	119	012200 40300	CONDOTTO
	197	741103 99682	SONDA D'OLIO - OPTIONALE
	201	007801 40500	FILANGIA - GILETTATA
	202	007802 40500	FILANGIA 90° - OPTIONALE
	203	537506 99633	VALVOLA NON RITORNO
	205	947701 00000	CHIAVETTA

INDICE	Pos.	No. Identificazione	Designazione
		960009 00000 960016 00100 960023 00100	BECKER LUBE M 100 (OLIO MINERALE) - 1L BECKER LUBE S 100 (OLIO SINTETICO) - 1L BECKER LUBE SL 100 (SETTORE ALIMENTARE) - 1L
¹⁾ Serie di guarnizione - 549000 40500 - Pos.: 11, 12, 25, 26, 42, 55, 62, 65, 73, 91, 104, 106, 117, 147, 208 ²⁾ quantità di ordinazione necessari / manutenzione			

INDICE	Pos.	No. De pedido	Descripción
U 4.40	□	549000 40500	JUNTA COMPLETA ¹⁾
	4	500101 40500	CARCASA
	6	020000 40500	ÉMBOLO
	7	900585 00003	EMPUJADOR (KIT) ²⁾
	8	000700 40500	TAPA LATERAL
	9	945618 00000	VARILLA ROSCADA
	14	945373 00000	TORNILLO HEXAGONAL INTERIOR
	15	945374 00000	TORNILLO HEXAGONAL INTERIOR
	16	947628 01000	PASADOR CILÍNDRICO
	17	945801 01000	VARILLA ROSCADA
	18	901807 00000	TORNILLO TERMINAL DE ÁRBOL
	19	949203 00000	POLEA DENTADA
	20	016800 05000	ARANDELA TENSORA
	21	537500 10700	VÁLVULA COMPLETA
	28	946917 00000	ESPÁRRAGO
	29	917107 00000	MUELLE DE DISCO
	30	947105 00000	TUERCA HEXAGONAL
	32	951228 02000	TORNILLO DE CIERRE
	36	068101 40500	APOYO
	37	945634 00000	VARILLA ROSCADA
	38	741310 60000	AMORTIGUADOR DE GOMA
	44	867800 99559	FLOTADOR
	45	005001 40300	CRIBA
	47	727503 99628	VÁLVULA DE BARRIDO
	58	965414 00000	ELEMENTO DE DESACEITAR DE AIRE (1x) ²⁾
	59	016802 40300	ARANDELA TENSORA
	60	921500 50000	EMPUÑADURA
	63	003700 40500	TAPA
	66	945320 00000	TORNILLO HEXAGONAL INTERIOR
	67	953103 00000	TOBERA DE SILENCIADOR ACÚSTICO
	72	005000 40500	CRIBA
	74	945321 00000	TORNILLO HEXAGONAL INTERIOR
	82	960200 40500	REFRIGERADOR
	83	917800 40500	CHAPA LATERAL
	84	960700 40500	CAPERUZA DE VENTILADOR
	85	946308 00000	TORNILLO CILÍNDRICO
	86	948750 00000	REMACHE CIEGO
	89	912317 00000	TORNILLO DE EMPALME
	90	948407 00000	TORNILLO HUECO
	94	012203 40500	CONDUCTO
	95	012204 40500	CONDUCTO
	97	068100 40300	APOYO
	98	741310 80000	AMORTIGUADOR DE GOMA
	99	945218 00000	TORNILLO HEXAGONAL
	101	002401 40500	CARCASA DE SEPARADOR DE ACEITE
	103	907309 00000	CRISTAL MIRILLA DE ACEITE
	105	951219 00000	TORNILLO DE CIERRE
	107	951221 00000	TORNILLO DE CIERRE
	110	916800 10000	TAPA ROSCADA
	114	912318 00000	TORNILLO DE EMPALME
	115	003300 10700	TOBERA
	116	912300 00000	TORNILLO DE EMPALME
	118	009400 19000	TORNILLO DE PIEZA ESFÉRICA
	119	012200 40300	CONDUCTO
	197	741103 99682	GENERADOR DE NIVEL - OPCIONAL
	201	007801 40500	BRIDA ROSCADA - STANDARD
	202	007802 40500	BRIDA ROSCADA 90° - OPCIONAL
	203	537506 99633	VÁLVULA ANTIRRETORNO
	205	947701 00000	CHAVETA

INDICE	Pos.	No. De pedido	Descripción
		960009 00000 960016 00100 960023 00100	BECKER LUBE M 100 (ACEITE MINERAL) - 1L BECKER LUBE S 100 (ACEITE SINTÉTICO) - 1L BECKER LUBE SL 100 (SECTOR ALIMENTARIO) - 1L
¹⁾ Junta completa - 549000 40500 - Pos.: 11, 12, 25, 26, 42, 55, 62, 65, 73, 91, 104, 106, 117, 147, 208 ²⁾ cantidad necesario / mantenimiento			

U 4.40	Variante 	Pos. ²⁾	Bestell Nr. / Ident No. / No. Identification / No. Identificazione / No. De pedido		Beschreibung / Description / Designation / Designazione / Desripcion
① /09 - mit Gasballastventil - with gas ballast valve - avec l'este d'air - con valvola di zavoratrice - con valvula de lastre de gas		32		954228-02000	VERSCHLUSS-SCHRAUBE / LOCKING SCREW / BOUCHON / VITE DI CHIUSURA / TORNILLO DE CIERRE
		117	948002 00000		DICHTUNG / GASKET / JOINT / GUARNIZIONE / JUNTA
		118	009400 19000		KUGELSTÜCKSCHRAUBE / HOLLOW HOLDING SCREW / VIS CREUSE DE FIXATION / VITE PASSAGIO OLIO / TORNILLO DE ESFÉRICA
		190	568701 99683		GASBALLASTVENTIL / GAS BALLAST VALVE / L'ESTE D'AIR / VALVOLA DI ZAVORATRICE / VÁLVULA DE LASTRE DE GAS
		191	512000 40500		LEITUNG / PIPE / TUYAU / CONDOTTO / CONDUCTO
		192	740001 01000		FILTER / FILTRE / FILTRO
		193	912304 00000		ANSCHLUSS-SCHRAUBE / CONNECTION SCREW / VIS DE RACCORDEMENT / VITE DI RACCORDO / TORNILLO DE EMPALME
② ③ /0-25 + /0-56 - mit Öl-Wasser-Kühler - with oil-to-water heat exchanger - avec réfrigérant à l'huile et à l'eau - con radiatore ad olio - acqua - con refrigerador aceite-agua		82		960201-40500	KÜHLER / COOLER / REFROIDISSEUR / RAFREDDATORE / REFRIGERADOR
		83		947800-40500	HALTERRING / RETAINING RING / BAGUE DE MAINTIENT / ANELLO PORTANTE / CHAPA LATERAL
		84	460700 40500	960700-40500	LÜFTERHAUBE / VENTILATOR HOOD / CARTER DE VENTILATEUR / CARTER DEL VENTILATORE / CAPERUZA DE VENTILADOR
		89		942347-00000	ANSCHLUSS-SCHRAUBE / CONNECTION SCREW / VIS DE RACCORDEMENT / VITE DI RACCORDO / TORNILLO DE EMPALME
		94	012205 40500	042203-40500	LEITUNG / PIPE / TUYAU / CONDOTTO / CONDUCTO
		95	012206 40500	042204-40500	LEITUNG / PIPE / TUYAU / CONDOTTO / CONDUCTO
		97		068400-40300	STÜTZE / SUPPORT PILLAR / SUPPORT INTERMEDIAIRE / SUPPORTO / APOYO
		98		744340-80000	GUMMIPUFFER / RUBBER BUFFER / AMORTISSEUR EN CAOUTCHOUC / AMMORTIZZATORE IN GOMMA / AMORTIGUADOR DE GOMA
		99		945248-00000	SECHSKANTSCHRAUBE / HEX. HEAD SCREW / VIS HEXAGONALE / VITE ESAGONALE / TORNILLO HEXAGONAL
		141	960205 40300		KÜHLER / COOLER / REFROIDISSEUR / RAFREDDATORE / REFRIGERADOR
		146	948402 00000		HOHLSCHRAUBE / HOLLOW SCREW / VIS CREUSE / VITE ESAGONALE / TORNILLO HUECO
	147	948030 00000		DICHTRING / GASKET / JOINT / GUARNIZIONE / JUNTA	

²⁾ variantenabhängige Bauteile / variant-dependent components / composants variante-dependantes / componenti variante-dispendenti / componentes variante-dependientes